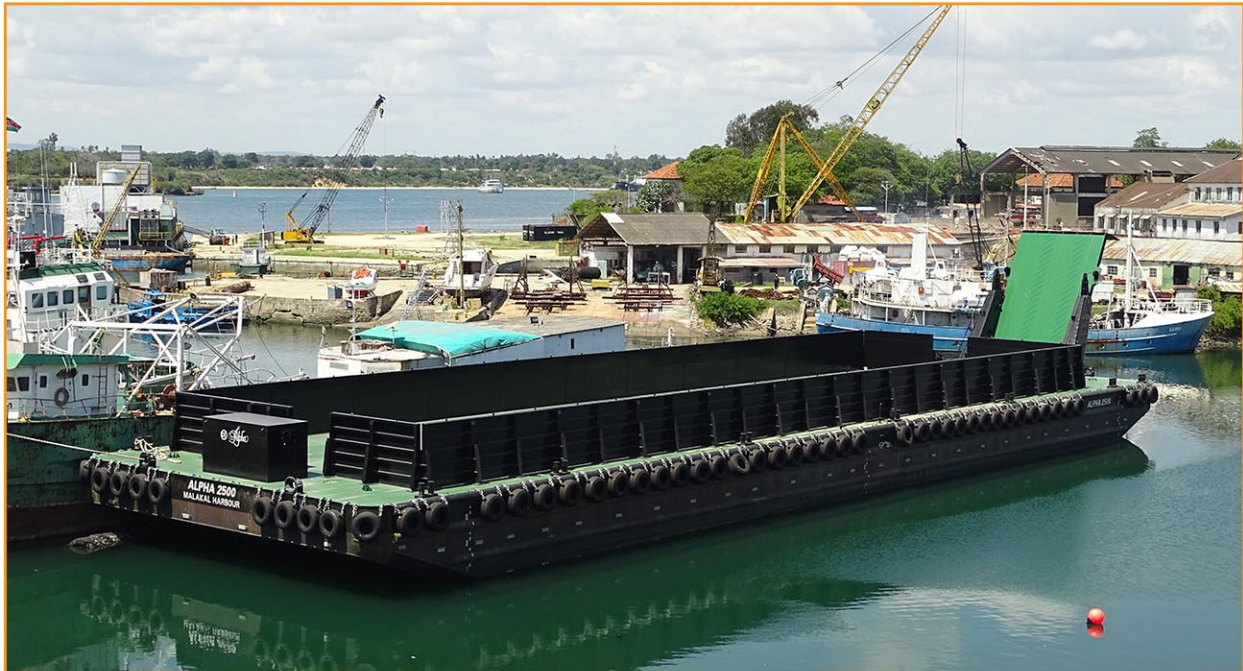


# RO-RO BARGE

## Technical Specification Sheet

Vessel Name: ALPHA 2500



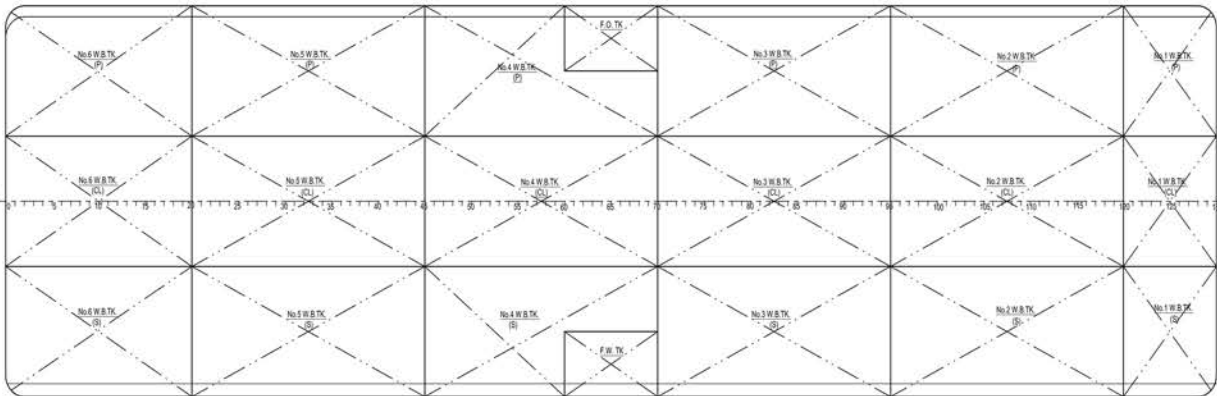
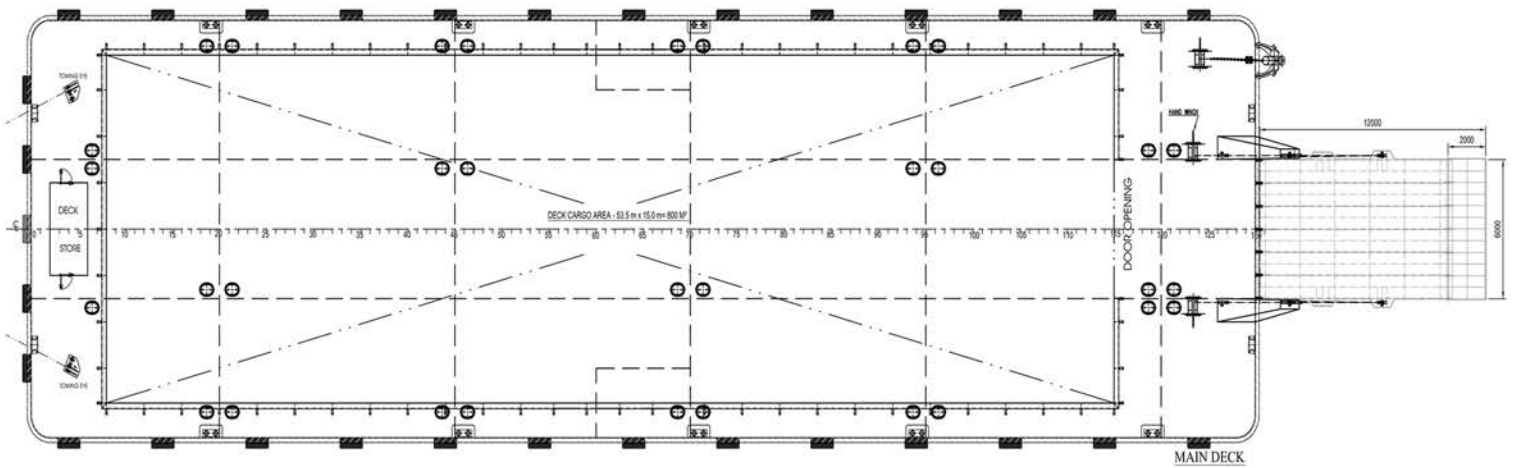
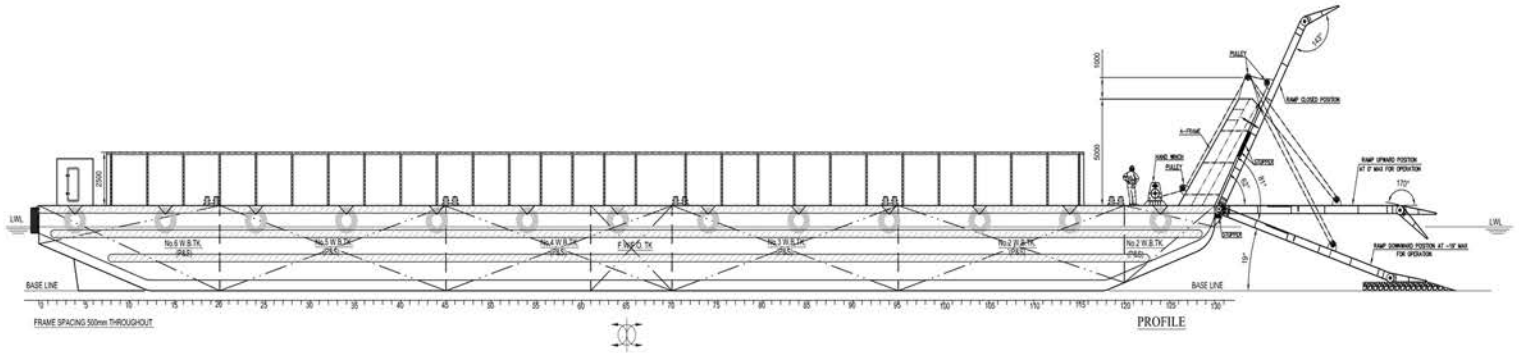
|                       |                                    |                     |
|-----------------------|------------------------------------|---------------------|
| <b>Vessel Type</b>    | Ro-Ro (Ballastable) Barge          |                     |
| <b>Classification</b> | Indian Register of Shipping (IACS) |                     |
| <b>Dimensions</b>     | Length Overall                     | 65m                 |
|                       | Breadth Overall                    | 18m                 |
|                       | Draft                              | 3m                  |
|                       | Depth                              | 4m                  |
|                       | Deck Area                          | 900m <sup>2</sup>   |
|                       | Ramp                               | 12 m x 6m           |
|                       | <b>Capacities</b>                  | Dead Weight Tonnage |
| Fuel Cargo Tanks (MT) |                                    | 50T                 |
| Fresh Water           |                                    | 50T                 |
| <b>Scantlings</b>     | Top                                | 12mm                |
|                       | Bottom                             | 10mm                |
|                       | Sides                              | 10mm                |
| <b>Skeg</b>           | Port and Starboard (Aft)           |                     |

|                         |  |                      |
|-------------------------|--|----------------------|
| <b>Special Features</b> | Deck Strength  | 15T/m <sup>2</sup>   |
|                         | All tanks are marine paint coated  |                      |
|                         | All tanks are ballastable  |                      |
|                         | Modular side walls (removable)   | 2.5m                 |
|                         | Specially designed for shallow water and beaching operations (low draft) |                      |
|                         | Low steep winch operated ramp  |                      |
|                         | With RO-RO Capabilities  |                      |
| <b>Deck Equipment</b>   | Anchor/ramp winch 8T capacity electrical/engine driven                   |                      |
|                         | Bollands   | 8 x 8 NB pipes       |
|                         | Towing Brackets  | 4 x 22T (Port 2 STB) |
|                         | FWD - AFT  |                      |
| <b>Fendering</b>        | Half round pipe 14" at three levels (Pipe schedule 120mm)                |                      |

# RO-RO BARGE

## Technical Specification Sheet

Vessel Name: ALPHA 2500



PLAN(S) NOW SENT SUPERSEDE THE APPROPRIATE PLAN(S) PREVIOUSLY APPROVED/NOTED ON 27.AUG.2015

INDIAN REGISTER OF SHIPPING  
MUMBAI  
DATE: 03 Sep 2015  
NOTED FOR INFORMATION

### MAIN PARTICULARS

|               |                    |
|---------------|--------------------|
| LENGTH O.A.   | 65.00M             |
| BREADTH       | 18.00M             |
| DEPTH         | 4.00M              |
| DRAFT         | 3.00M              |
| DEADWEIGHT    | 2200T              |
| DECK STRENGTH | 15T/M <sup>2</sup> |

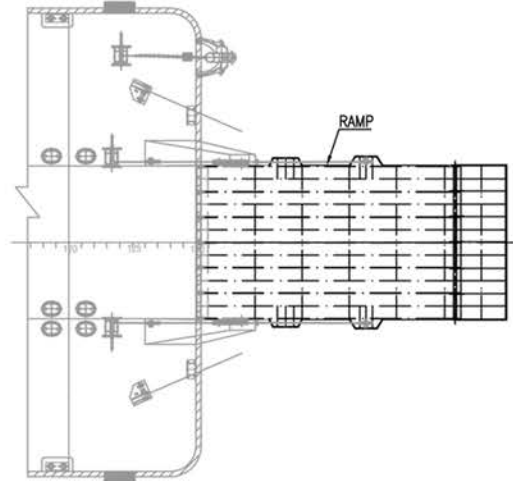
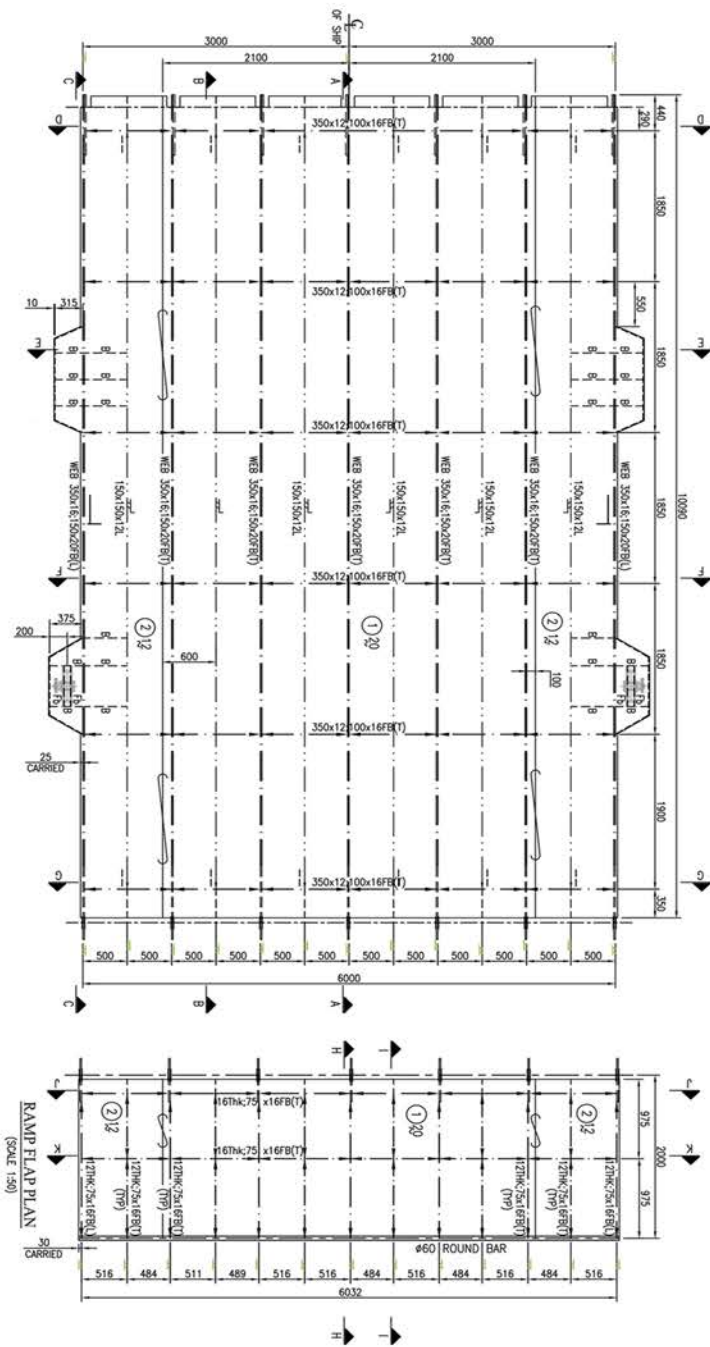
NOTES :-  
 1) DURING LONG INTERNATIONAL VOYAGES MINIMUM 2.5 M. DRAFT TO BE MAINTAINED.  
 2) HOW EVER SHORT VOYAGES CAN BE PERFORMED AT LOWER DRAFT IN FAIR WEATHER CONDITION.  
 3) INTERNAL STRUCTURE OF BALLAST WATER TANKS SHALL BE PROTECTED WITH CORROSION RESISTANT HARD EPOXY/ZINC COATING.



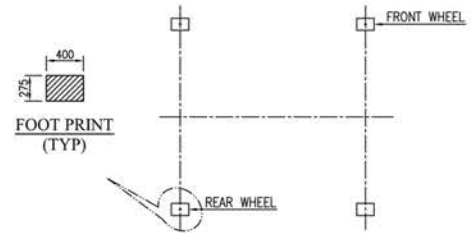
# RO-RO BARGE

## Technical Specification Sheet

Vessel Name: ALPHA 2500



### VEHICLE FOOT PRINTS



| RAMP PARTICULARS           |                          |
|----------------------------|--------------------------|
| <b>Length Overall</b>      | : 12.09m                 |
| <b>Breadth</b>             | : 8m                     |
| <b>Capacity</b>            |                          |
| Vehicle weight             | : 80T                    |
| Max tyre pressure          | : 81.577T/m <sup>2</sup> |
| No. of Axle                | : 6 Nos.                 |
| Axle Load                  | : 16T                    |
| No. of wheels on each axle | : 4 Nos.                 |

### RAMP PLAN

(SCALE 1:50)

