



ENGINEERING | LOGISTICS | SUPPLY CHAIN MANAGEMENT



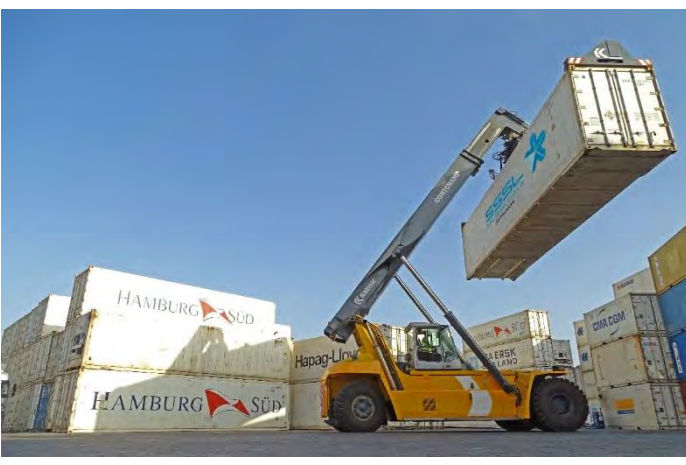
[www.alphaafrica.com](http://www.alphaafrica.com)



Food Division



Engineering, Logistics & Supply Chain Management Division

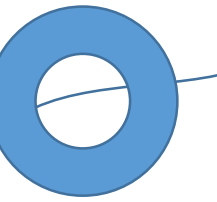




# KEY MILESTONES



1994



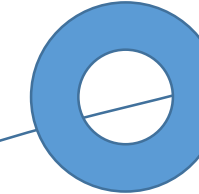
Southern Shipping Services Ltd (SSSL) established



1993

Alpha Group expands into Tanzania and Uganda

1991



*East African Sea Food Ltd.*

East African Sea Food Ltd was formed

1988

Alpha Group acquires fishing trawlers from Australia

1987

1985



The first vessel to be built by SECO, Alpha K in 1985

1979



1971

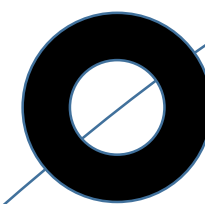


The first fish trawler arrives from Greece in 1971 to Kenya. Alpha enters the Fishing Industry

1964

The first generation of the Kurji Family began the Alpha Group Journey - Mr. Karim Kurji

1950s





# KEY MILESTONES



Alpha Logistics Tanzania was formed marking the entry into the Oil & Gas Industry

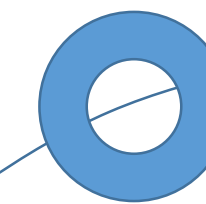


Alpha group established its first relationship with the United Nations through Alpha Logistics and penetrates into Somalia



First major ship repair project for SECO in Uganda

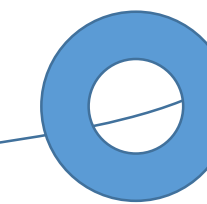
2009



Alpha Kirawira, RORO vessel and Mussa K bunkering vessels were built for Alpha Logistics and Alfoss respectively by SECO



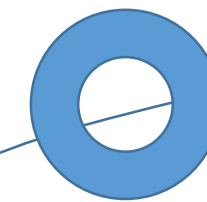
2012



1. Alpha Group starts working in Mozambique
2. SECO opens a new fully equipped fabrication workshop and new office building at its shipyard in Mombasa

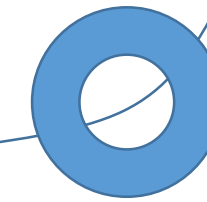


2013

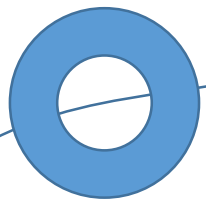


SECO is awarded the EPC contract for housing and associated social infrastructure in Turkana for the Lake Turkana Wind Power project

2014

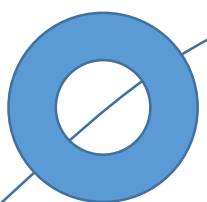


2001



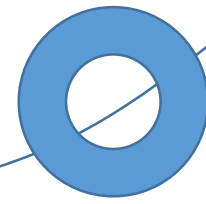
Alpha Logistics Kenya was formed providing marine logistics services with an EPZ licence

2004



The first offshore exploration in Kenya managed from SECO's base by Woodside Energy (Kenya) Ltd

2008





# KEY MILESTONES

**Summit**  
SECO Camps & Catering

Summit - SECO Camps & Catering, a business arm of SECO is formed



2015

Partnered with Anipsotiki for the erection of 365 wind turbines in the LTWP project



Alpha group establishes a joint venture with Vanthek (Netherlands) forming "Alphahek" for piling and drilling projects



Alpha 2500 flat top barge, first IACS Class (IRS) unit built in Kenya



Completion of Pangani Jetty in Tanzania



Completion of SECO Jetty Extension



2017

SECO executes a 210 accommodation contract in Mogadishu for the UN



Acquisition of Petra II (chartered to World Food Program), Alpha Stone Town, Alpha 3000, Alpha Mc Ginty



Construction and delivery of Research Boat- Umurage



Alpha Logistics Services (EPZ) Ltd partnered with LBH and Subtech to create ALS Alliance. This Alliance is providing logistics services in the north of Mozambique in connection with the LNG Developments



Completion of the construction of Kisumu Oil Jetty by SECO

2018



A 'Grade A' integrated logistics facility built by SECO, strategically located on the Eastern By-pass, Nairobi. The park provides state-of-the-art cold storage services, office space, dry warehousing and sufficient lay-down area ensuring flexibility to the different needs of varying clients.





# KEY MILESTONES



Summit - SECO Camps & Catering, completes Accommodation camp at Bonje, Mombasa and hands it over to FUJITA, the client



2019

Towing and Salvage services by Alpha Logistics Services (EPZ) Ltd



Fabrication and Delivery of TBL Templates for Subtech Group in Mozambique by SECO



Hapa Kazi Tu 01 and 02 completed and handed over to Tanzania Ports Authority (TPA)



2019



SECO Marine (U) Ltd is formed

2020



ALPHAHEK & SECO Commences piling works at Mombasa Port area Road Development Project, Mombasa



2021



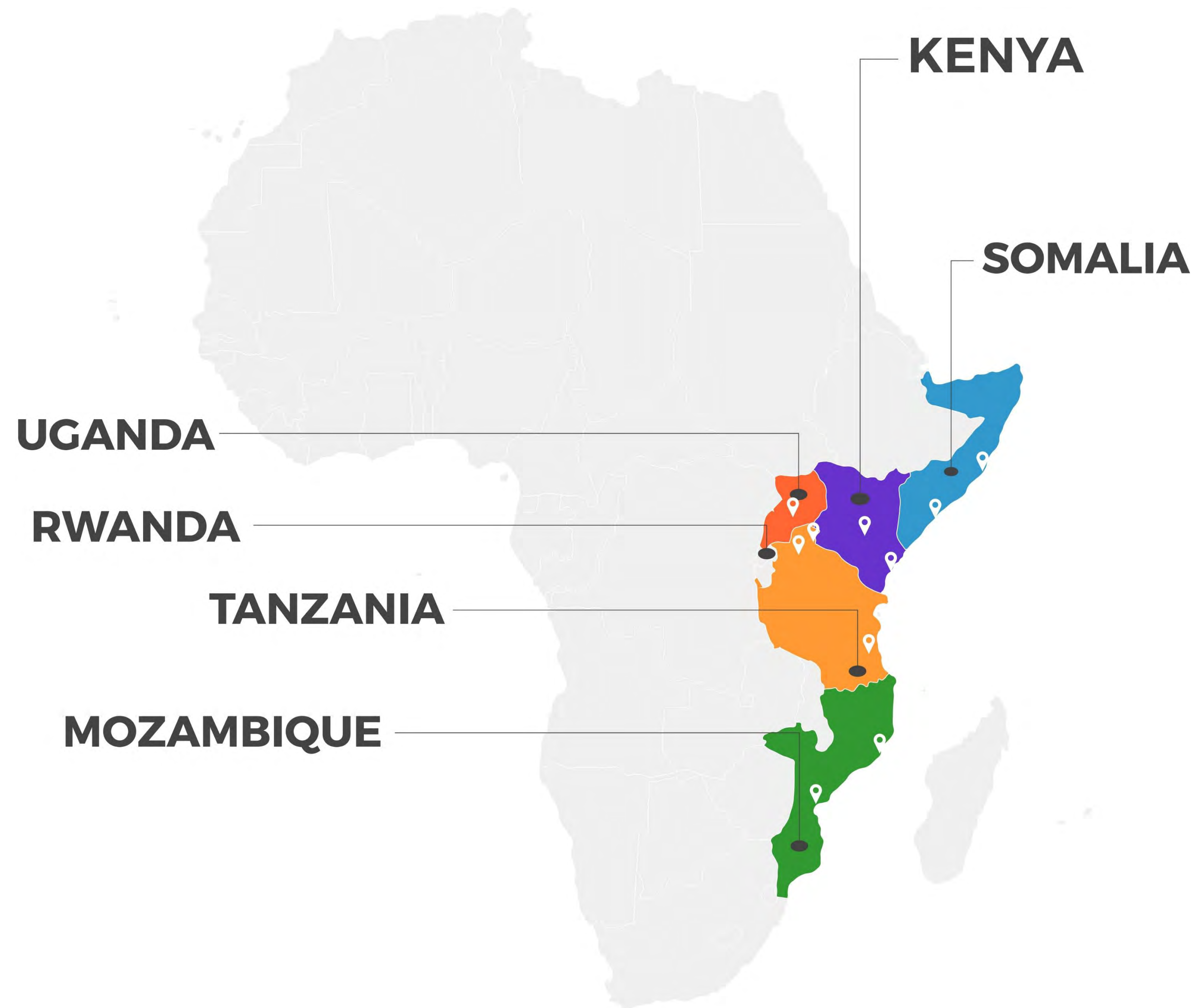
ACM Commences the Construction of Alpha Village in the Gas city of Palma, Mozambique



SECO delivers three (3) Pilot Boats ordered to the Tanzania Ports Authority (TPA), all built under class







# ALPHA GROUP TODAY

- One of the leading Engineering, Logistics and Supply Chain Management conglomerate in sub-Saharan Africa with operations in 6 countries
- Kenya, Uganda, Tanzania, Rwanda, Somalia and Mozambique
- Alpha Group's over 6000 employees serve over 300 customers regionally/globally
- In addition to strong market position and brand, Alpha Group's key strength is its flexible business model and operational efficiency



# SOUTHERN ENGINEERING CO. LTD (SECO)

[www.secoafrica.com](http://www.secoafrica.com)





Southern Engineering Co. Ltd (SECO), an Alpha Group company, is an ISO 9001 and RINA accredited solution driven engineering company specializing in marine and offshore engineering. Areas of specialization include:

- Shipbuilding
- Ship Repairs, Maintenance & Conversions
- Onshore / Offshore Site Survey
- Onshore / Offshore Civil Works / EPC Contractor
- Mechanical Engineering
- Inspections & Certifications
- Engineered Heavy Lifting
- Customized Containers Solutions
- Summit - SECO Camps & Catering





# SHIPBUILDING

SECO builds a wide range of highly efficient ships with lasting competitiveness, all build under International Association of Classification Societies (IACS) classifications.

We offer our combined technical know-how in the areas of design, engineering, project management, construction, installation and commissioning. We are shipbuilders, delivering quality on-time - as we have done since 1957.

*Shipbuilding made in Kenya, by Kenyans.*





# ALPHA **KIRAWIRA**

TYPE: Multi-purpose Vessel

CLASS: IRS

CLIENT: Alpha Logistics, Tanzania

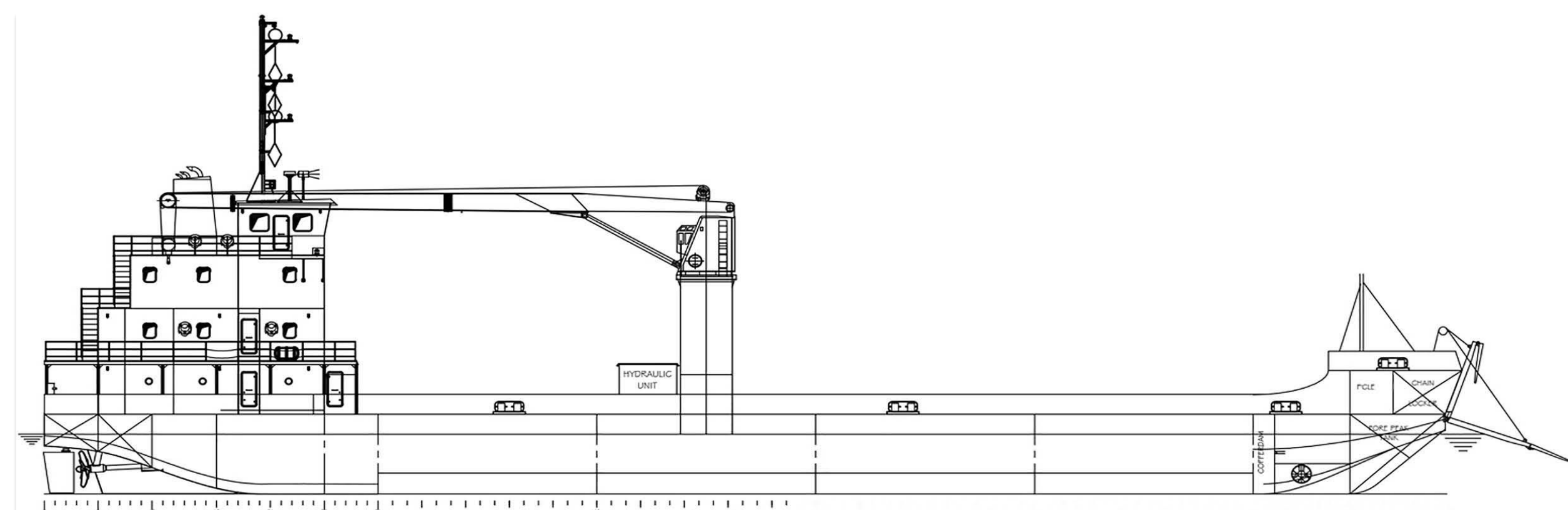
LENGTH: 64.80m

BREADTH: 15.50m

DRAFT: 3.00m

DEPTH: 4.00m

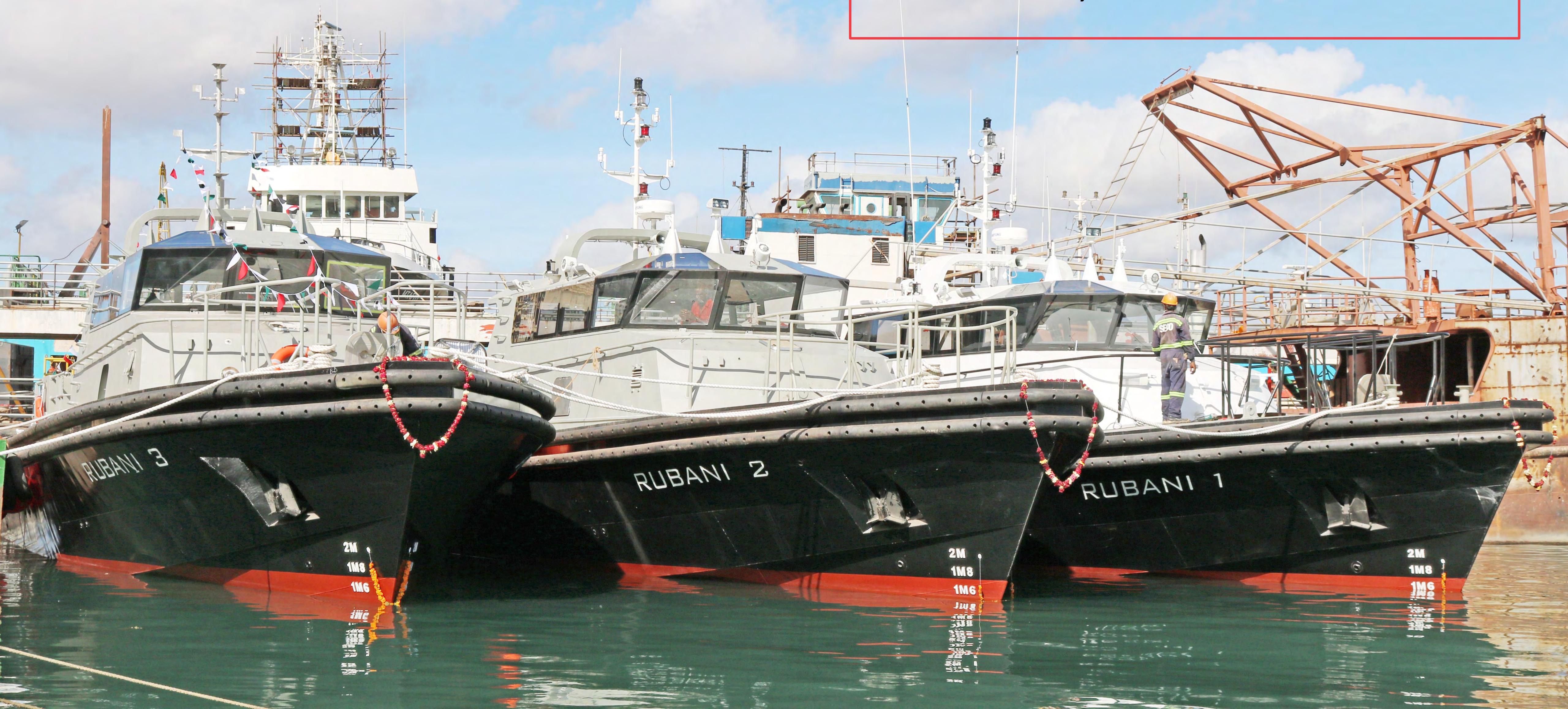
CAPACITY: 1500 MT or 70 TEU





# RUBANI 1, 2 and 3

PORTS: TANGA, DAR ES SALAAM & MTWARA





# RUBANI 1, 2 and 3

TYPE: Pilot Boats

CLASS: Bureau Veritas

CLIENT: Tanzania Ports Authority (TPA)

LENGTH: 20.00m

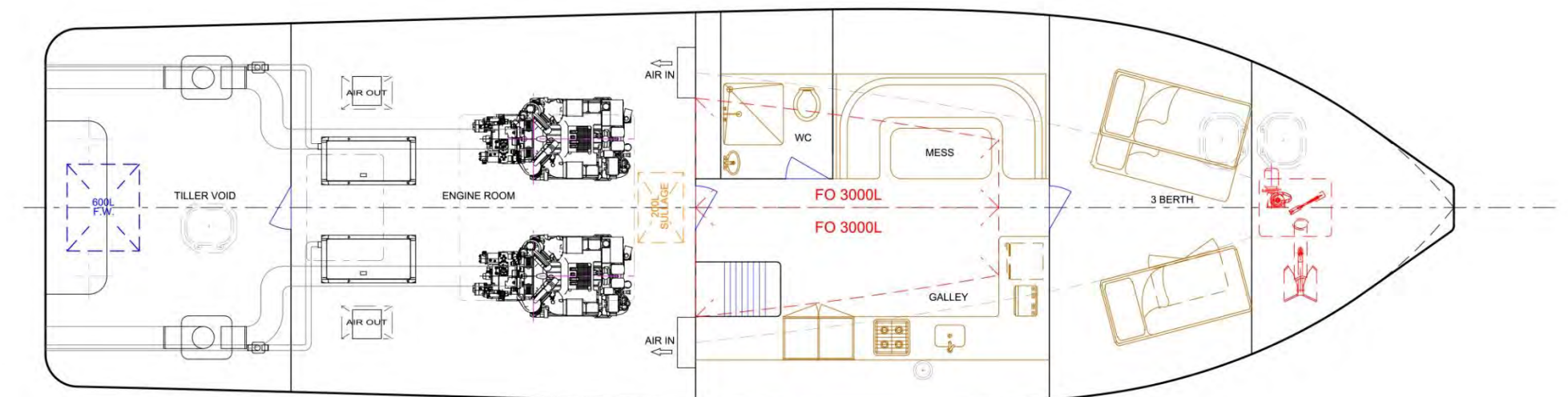
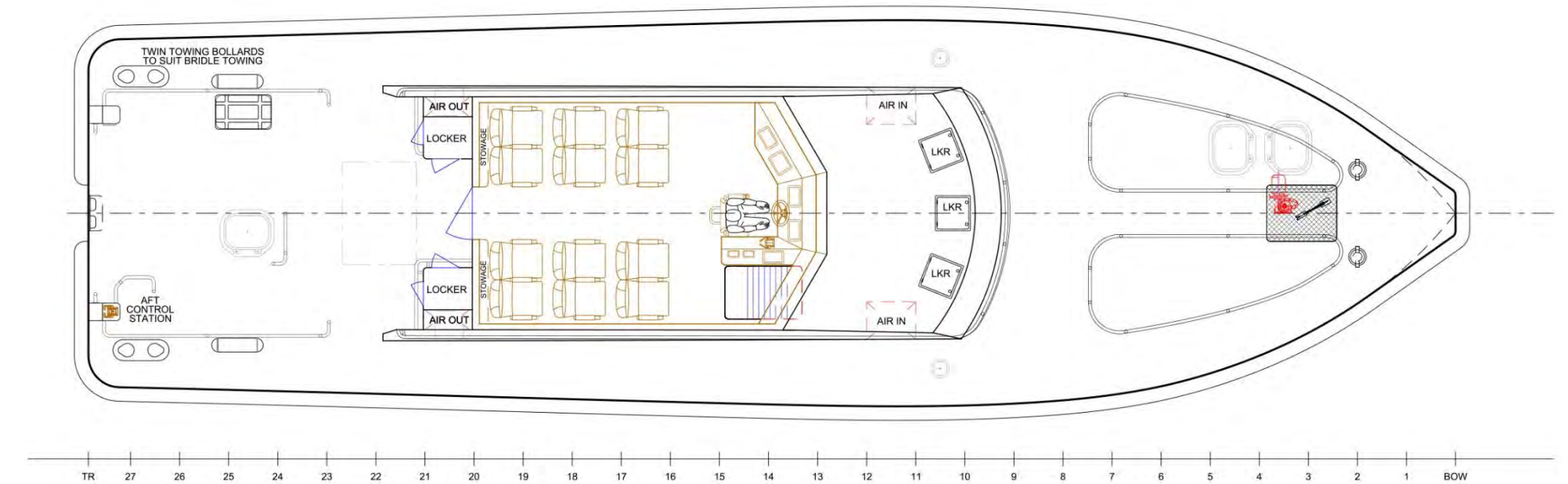
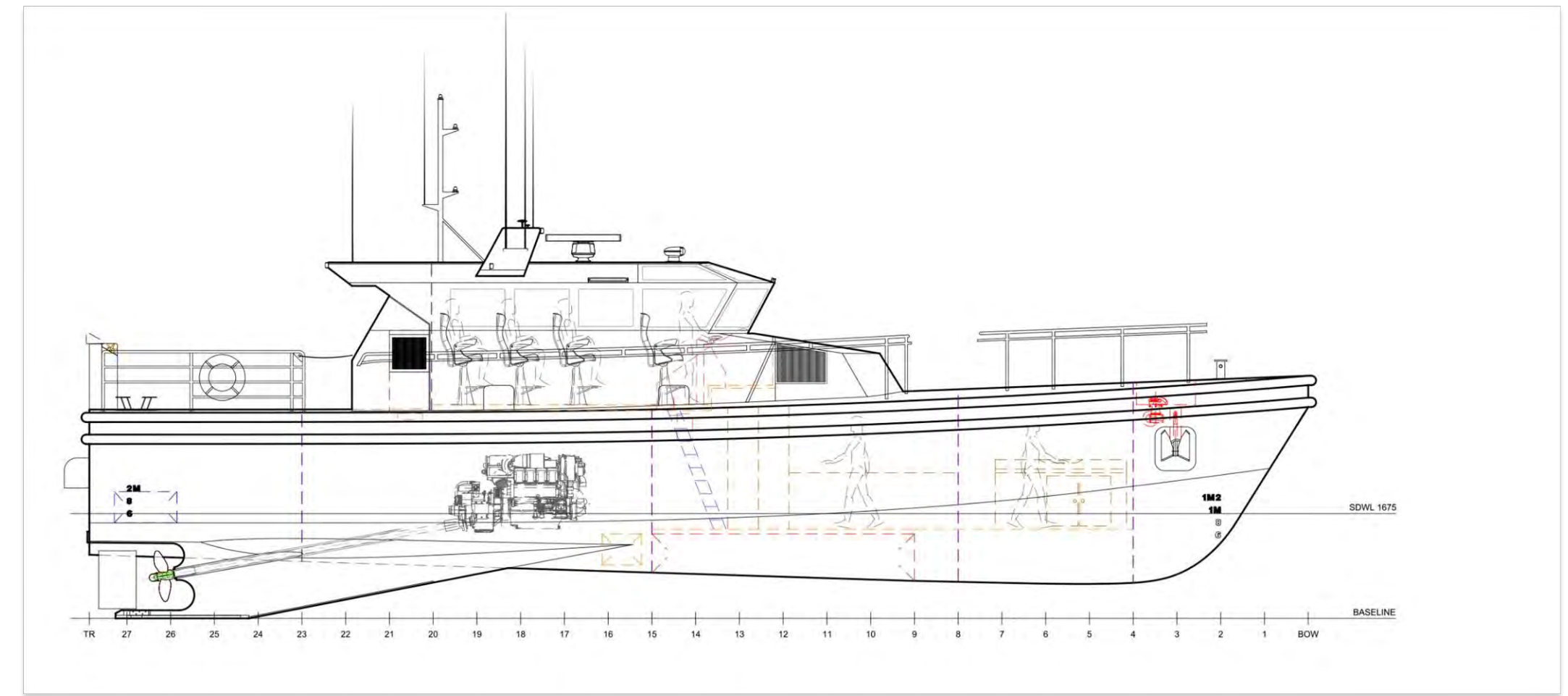
BREADTH: 5.50m

DEPTH: 3.00m

DRAFT: 1.70m

SPEED: 21 Knots

CAPACITY: 12 seats+3 Crew Accommodation





# PROVEN DESIGN IN ALL CONDITIONS

- Award winning Pilot Boat Design
- Propulsion system - 2 x 892 kw MAN Engines ,Twin Screw, 5 blade propellers

## Main tasks:

- Personnel Pilot duties
- Maritime safety enforcement
- Search and rescue operations





# RECENT SHIP DELIVERIES



Name: Rubani 1, 2 and 3  
Type: *Pilot Boats*  
Client: TPA



Name: Hapa Kazi Tu 01 and 02  
Type: *Cargo Barges*  
Client: TPA



Name: MV Umurage  
Type: *Research Vessel*  
Client: EDCL, Rwanda



Name: Alpha 2500  
Type: *Ro-Ro Barge*  
Client: Alpha Logistics, Kenya



Name: MV Albert Nile  
Type: *Modular Ferry*  
Client: UNRA, Uganda



Name: Alpha Kirawira  
Type: *Multi-purpose Vessel*  
Client: Alpha Logistics, Tanzania



Name: Mussa K  
Type: *Double Skin Bunker*  
Client: Alfoss, Kenya



Name: Alpha Trion  
Type: *Jack-up Barge*  
Client: Alpha Logistics, Kenya



Name: Obongi, Laropi, Bisina  
Type: *Modular Ferries*  
Client: UNRA, Uganda



Name: Alpha Jimbo  
Type: *Cargo Barge*  
Client: Alpha Logistics, Kenya





# SHIP REPAIRS, MAINTENANCE & CONVERSIONS

Our floating dry dock accommodate ships with a length of up to 75 meters, beam of 12.5m and a maximum weight of 1,100 tons.

- Docking of all kinds of ships
- Steel renewals, Hull preservation and Tank coating
- Main engine overhauls
- Propulsion system overhauls
- Repair of Deck Machinery
- Renewal of piping
- Servicing of air conditioning and refrigeration systems
- Repair of navigational equipment, electrical, electronic and instrumentation systems

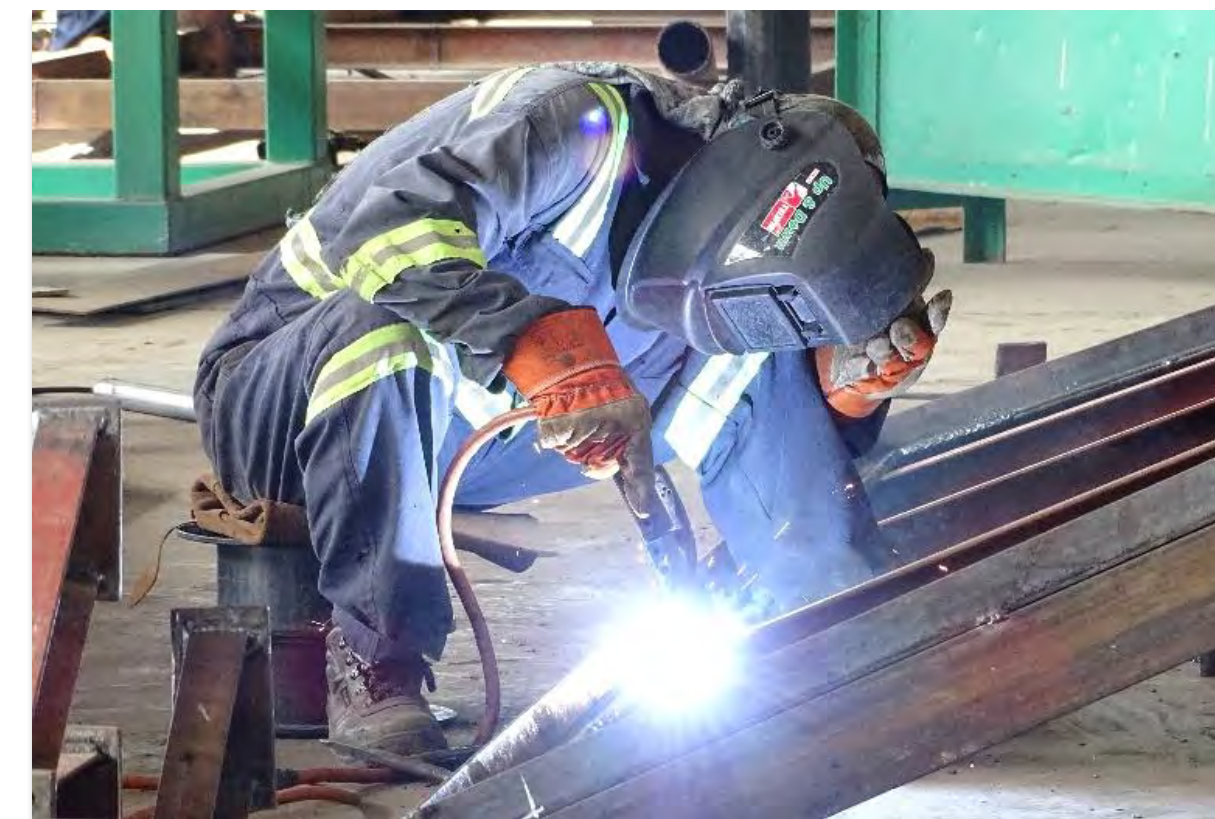




# MECHANICAL ENGINEERING SERVICES

SECO is proud to be one the most diversified specialty steel fabricating company in East Africa. Dedicated to the production of high quality custom metal fabrication with on-time delivery that meets or exceeds our customer's satisfaction.

- Steel Fabrication
- Machine Shop Services
- Pipeline Construction and Maintenance
- Tank Construction, Repairs & Maintenance
- Supply of Specialized Manpower





# RECENT FABRICATION PROJECTS



Name: TBL Templates  
Client: Subtech Group, SA



Name: Steel Pipe Bridge  
Client: Base Titanium, Kenya



Name: Bentonite/Polymer Tanks  
Client: SECO, Kenya



Name: 70-ton Landing Tower for  
Subsea Pipe Laying Project



Name: Screen Unit  
Client: Piacentini & Son Pty Ltd,  
Western Australia



Name: Customized Stairs  
Client: Tullow Oil Kenya



Name: Pipe Spools  
Client: Almansoori Production  
Services, Dubai



Name: Sacrificial shutters  
Client: Base Titanium, Kenya





# ENGINEERED HEAVY **LIFTING**

SECO's heavy lifting services support clients in every major industrial sector. With a combination of specialized equipment and in-depth, sector-specific engineering experience, SECO helps clients benefit from greater safety and efficiency. Whether it's a capital project or ongoing maintenance, SECO will often find ways of shortening the critical path through carefully planned and executed lifting operations.

- Lifting equipment rental including spreaders and cradles
- Complex and Tandem lifts
- Contract lift projects





# HEAVY LIFTING OPERATION - LTWP

As part of the Vestas contract in Lake Turkana Wind Power Project, SECO had been contracted by Anipsotiki, a well-known company with vast experience in erecting wind turbines all around the world, to erect 365 wind mill turbines. SECO successfully completed the erection of the last wind mill turbine well ahead of schedule, overcoming the challenges that had been occasioned by the unpredictable wind behavior and with zero reported HSE incidents.





# CUSTOMIZED CONTAINERS

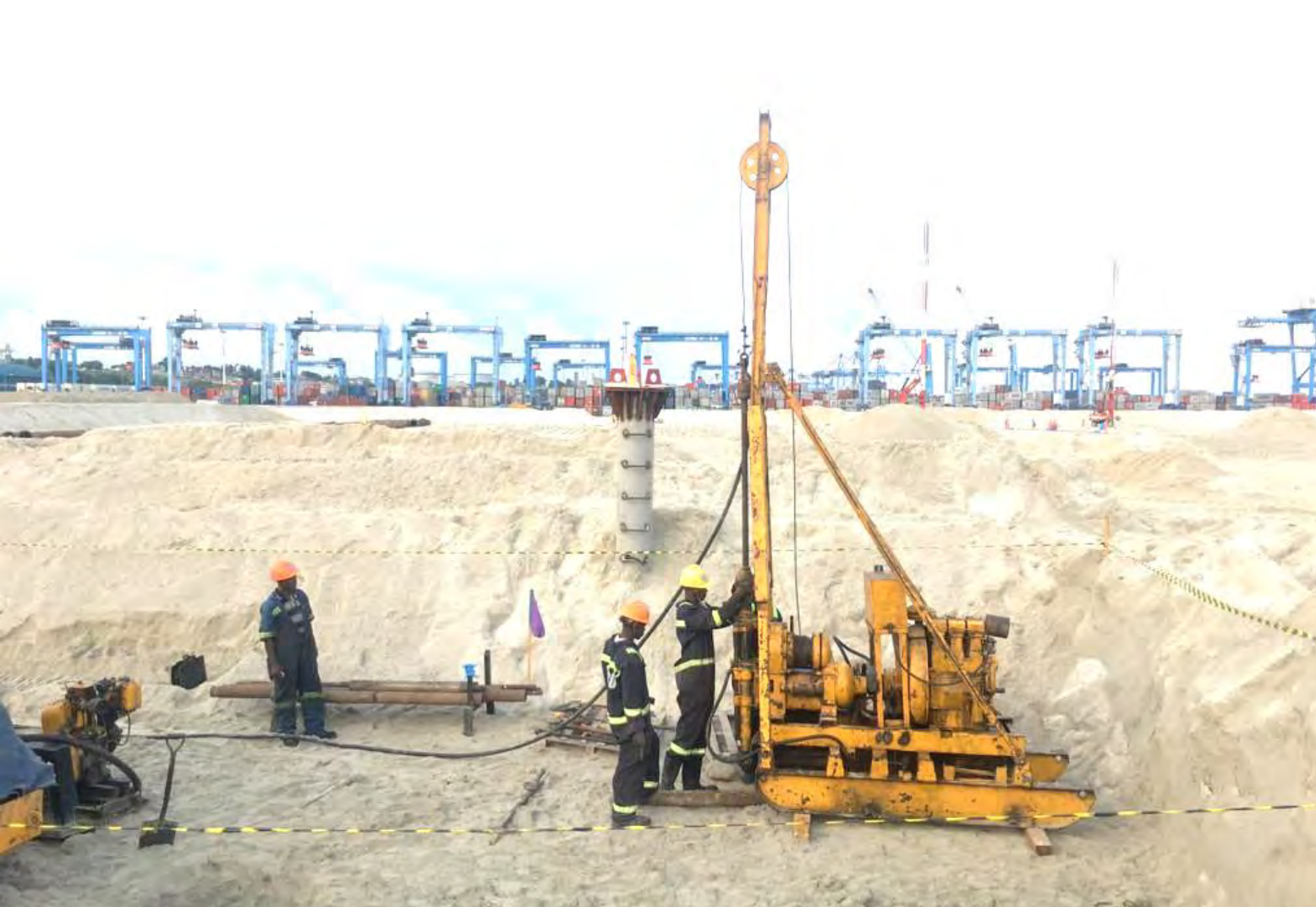
- Clinics / Laboratories (Hospitainers)
- Accommodation units
- Office spaces
- Ablution and Laundry units
- Workshops
- Laboratory and Storage units
- Kitchen & Dining units
- Multi-span structures
- Pop-up stores & Mixed-used units





# ONSHORE & OFFSHORE **SITE** **SURVEY**

- Geo-technical Site Investigation
- Bathymetric & Hydrographic Surveys
- Seismic Refraction Survey
- Magnetic Survey
- Topographic Survey
- Remotely Operated Vehicle (ROV) Inspections
- Diving & Underwater Photography





# DREDGING & RECLAMATION

Our projects include creation of new navigation channels or deepening of existing channels, port basins and vessel turning circles, trenches for tunnels and pipelines and creation of new land areas for various forms of infrastructure development.

We regularly employ in-house navigational software to minimize and optimize dredging layouts. Reclamation techniques that we employ are dependent upon the type of natural materials found at the site and we have successfully employed soil replacement, soil strengthening, vertical drains and surcharging, and deep compaction techniques to provide reclaimed land of the required engineering capabilities.





# ONSHORE & OFFSHORE PILING & TESTING

## PILING

- Bored Cast in Situ Concrete Piles (BCIS)
- Driven Piles – Steel and Pre-casts
- Sheet Piling
- Shoring works - Secant and Contiguous Piles
- Anchor works

## TESTING

- Static Load Test - Compressed
- Lateral Load Test
- Caliper and Sonic Logging
- Integrity Test (IT)
- Pile Driving Analyzer (PDA)
- High strain dynamic testing (HSDT)





# MOMBASA PORT AREA ROAD DEVELOPMENT PROJECT (PACKAGE 2)

SECO is involved in the ongoing Mombasa Port Area Road Development Project (Package 2) that involves the construction of the 8.96 km Mwache Junction via Tsunza – Mteza to Dongo Kundu section.

- Mwache bridge – 660 m
- Tsunza viaduct – 690 m
- Mteza bridge – 1,440 m

Project duration: 4 years





# ENGINEERING/DESIGN, PROCUREMENT & CONSTRUCTION CONTRACTOR – RECENTLY COMPLETED JETTIES



Project: Kisumu Oil Jetty - Kenya  
Client: Kenya Pipeline Company

The 95m long oil loading jetty will improve the movement of products and with time help Kenya regain its market share of East Africa's regional oil exports. The jetty can accommodate vessels of up to 90 m in length and with fuel carrying capacity of 3000 T.



Project: Pangani Jetty - Tanzania  
Client: Tanzania Ports Authority

Located in northeast Tanzania that lies 45 km south of Tanga, at the mouth of the Pangani River, the Jetty is designed for use by local fishermen and cargo vessels of up to 60 m in length, with a dead weight capacity of 2000 T.



Project: Nyamisati Jetty - Tanzania  
Client: Tanzania Ports Authority

Located 200 kms South of Dar es Salaam, the 50 m long approach trestle, Two breasting and mooring dolphins can accommodate cargo and fishing vessels as well as ferries of up to 90 m in length, with a dead weight capacity of 6000 T.



Project: SECO Jetty - Kenya

Strategically Located near the entrance of the port of Mombasa. 60 m on the long side , 30 m on channel side, specifically designed and dedicated for Marine PSV with a maximum draft of 11.5 meters.





# ENGINEERING/DESIGN, PROCUREMENT & CONSTRUCTION **CONTRACTOR** – CIVIL WORKS



Lake Turkana Wind Power Farm – Accommodation Village and Workshop

SECO was the first contractor to break ground at site. The wind farm, which is the largest in Africa, has a total of 365 wind turbines that produce a combined power output of 310 MW. The plant has been connected to the National grid through the 400kv double circuit Loiyangalani-Suswa transmission line.



Alpha Business Park

A ‘Grade A’ integrated logistics facility built by SECO, strategically located on the Eastern By-pass, Nairobi. The park provides state-of-the-art cold storage services, office space, dry warehousing and sufficient lay-down area ensuring flexibility to the different needs of varying clients.



Oil & Gas Machine Shop

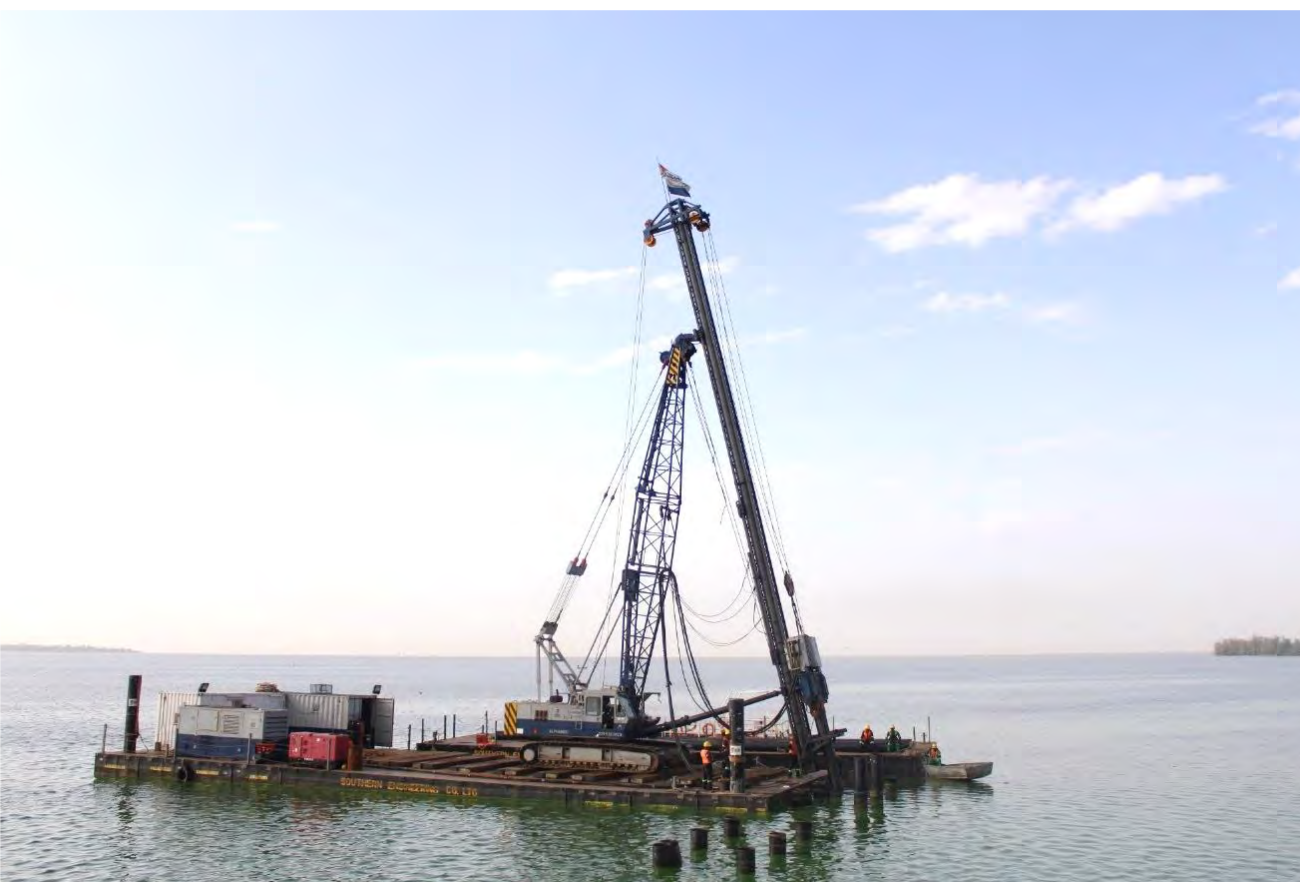
We set up an exclusive state of the art machine shop in Mombasa, Kenya. This modern facility takes care of the needs of all manufacturing and engineering requirements related to the oil, gas and geothermal industries.





**PARTNER IN PILING & DRILLING**

Ground Engineering Solutions for Onshore and Offshore Projects in East Africa. A Joint venture between Alpha Logistics Services (EPZ) Ltd and Vanthek International.



[www.alphahekafrica.com](http://www.alphahekafrica.com)





# ONSHORE & OFFSHORE STEEL PIPE PILING

ALPHAHEK Ltd, a joint venture company between Alpha Logistics Services (EPZ) Ltd and Van't Hek International, is a versatile foundation company in East Africa specialized in all types of steel pile foundation works.

- Driven Piles - Steel Tubular Piles
- Soldier Piles and Lagging
- Sand Compaction Piles
- King Piles
- Sheet Piles - Cofferdams (Temporary & Permanent)
- Driven Ductile Iron Piles
- Mini & Micro Piles







[www.alphalogisticsafrica.com](http://www.alphalogisticsafrica.com)





# MARINE LOGISTICS PROJECT SUPPORT SERVICES

An ISO 9001 accredited company that commercializes Alpha Group's expertise in various areas by providing marine logistical support to major infrastructure projects across the East African region.

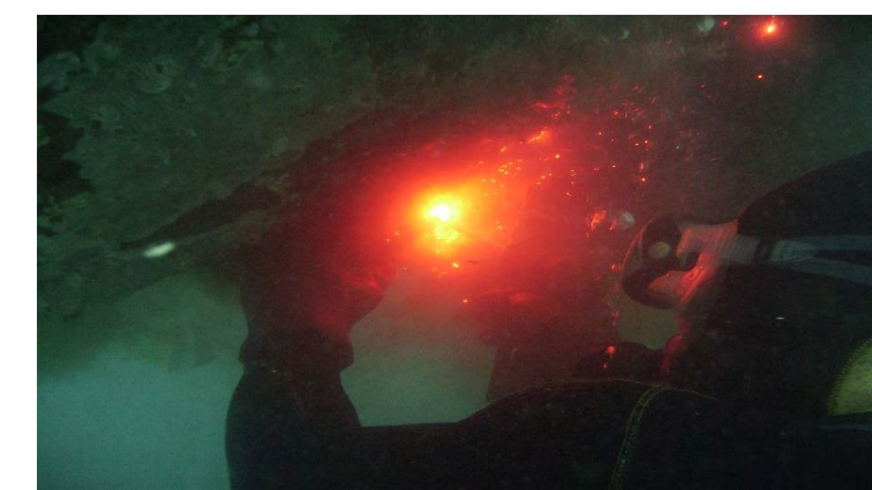




# MARINE CONTRACTOR SERVICES

We are well equipped with multi-purpose vessels and equipment to undertake a large range of offshore engineering works.

- Dredging & Land reclamation
- Salvage and Towage
- Marine maintenance and technical support
- Port Rehabilitation and wreck removal
- Marine oil terminals / oil head operations
- Subsea works





# VESSEL MANAGEMENT

ALSL offers a large fleet of offshore tugs, barges, ROLO/RORO ships, dredgers and other utility craft, chartering and hiring on both long term and short term basis.



Petra II



Alpha Kirawira



Alpha Transporter



Alpha Granada



Aylah 1



Alpha McGinty



Alphahek 1



Hippopotes



Alpha 2500



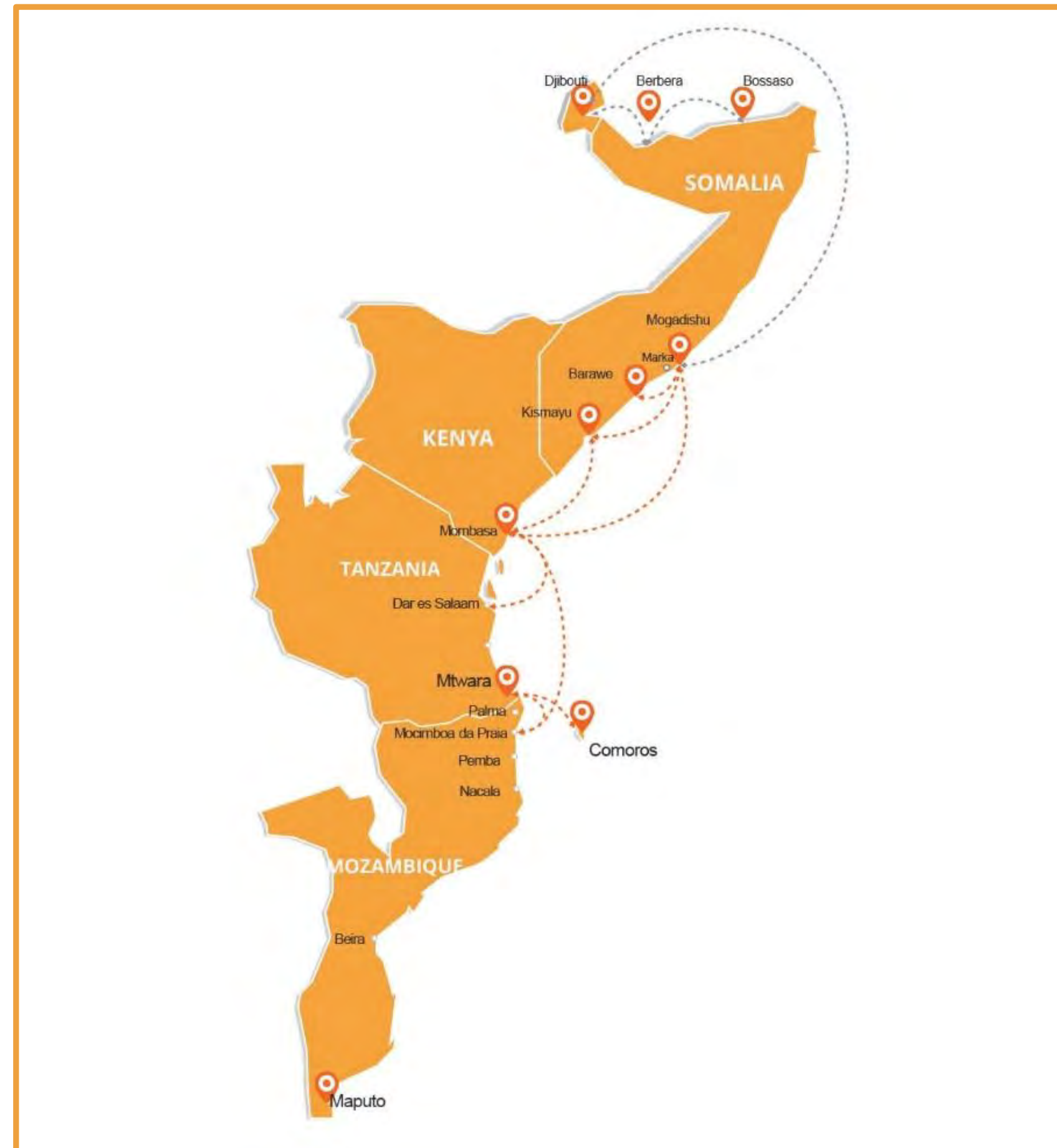
Alpha 5K



# FREIGHT FORWARDING

Our regional reach makes us the forwarding partner of choice for multinational companies, seeking a simplified, consistent and quality logistics services capability for their global operations. Cargo includes:

- Dry and reefer containers
- Project Cargo
- Vehicles and Heavy RO-RO equipment
- Loose cargo requiring special handling
- Transit cargo/ Transshipment cargo





# SSSL

Southern Shipping Services Ltd

*Supply Chain Management*





Southern Shipping Services Ltd (SSSL) specializes in cold chain warehousing and supply chain management (SCM) with ISO 22000:2018 and BRC certifications.

Established in 1994, SSSL has built a strong regional and worldwide presence by collaborating with strategic partners who provide a comprehensive network of integrated cold logistics services.

SSSL has a dedicated team of over 150 highly trained employees working across the region.

Areas of specialization include:

- Freight Forwarding
- Third-Party Cold Logistics (3PL)
- Equipment Rental
- Reefer Depot Services





## FREIGHT FORWARDING



- Licensed Custom Agents
- Imports & Exports services
- Clearing and Forwarding
- End-to-end Project Logistics
- Cross-border Transport Services

## THIRD-PARTY COLD LOGISTICS (3PL)



- Refrigerated Transport
- Multi-Temperature & Multi-Commodity Warehousing
- Product Storage and handling
- Picking & packing
- Regional Distribution

## EQUIPMENT RENTAL



- Reefer Containers
- Dry Containers
- Clip-on Gensets
- Under Mount Gensets
- Certified MHEs
- Refrigerated Trucks

## REEFER DEPOT SERVICES



- Reefer Handling & Storage
- Reefer Repair & Maintenance
- Genset Repair & Maintenance
- Reefer PTI & Plugin services
- Reefer monitoring services
- Container Lifting services



# FREIGHT FORWARDING AND SPECIALIZED PROJECT LOGISTICS

Our team has a global reach, with local expertise, providing unparalleled insight and experience to help our customers mitigate any foreseeable supply chain interruptions.

- Clearing and forwarding
- Route and bridge surveys
- Customs clearance
- Regulatory Compliance
- Logistics plans and site surveys
- Heavy-lift and oversize cargoes
- Road, sea and air transport including partial & full charters





# THIRD PARTY COLD LOGISTICS (3PL)

We offer customized warehousing and distribution solutions, allowing us to be a valued partner.

Whether it is a fully integrated or a stand-alone solution, our professional and dedicated team is ready to meet your needs today.

Areas of specialization include:

- Refrigerated Transport
- Multi-temperature & Multi-commodity Warehousing
- Distribution Services





# MULTI-TEMPERATURE & MULTI-COMMODITY WAREHOUSING

## Regional Footprint

- Strategic regional locations
- Grade A warehousing
- Modern shuttle racking system
- MHE operated facilities
- Warehouse Management System
- Certified to International Standards
- Multiple Docking areas
- Food grade pallets
- Floor load bearing to FM standards
- **Over 20,000** regional pallet positions
- Frozen, Chilled, Ambient & Dry
- Ample circulation and parking areas

Country	Cold Store Location	Pallet Positions
Kenya	Mombasa	6,000
	Nairobi	11,000
Tanzania	Dar-es-Salaam	1,800
Uganda	Entebbe	1,000
Rwanda	Kigali	600 + (1,600 W.I.P)
Mozambique	Pemba	444
	Nampula	444





# REEFER CONTAINER RENTALS

We rent 20ft and 40ft reefer containers out to businesses and individuals around the East African Region and offer a number of different container lease agreements from short-term plans to long-term ones.

We also offer a number of delivery options for your container and deliver to most places in the world, or if you wish, you can even pick it up from the depot yourself.

Our rental fleet consists only of units that are always in good condition and continuously tested for a hassle-free rental experience. All models are ISO standard containers which are also suitable for international transportation.





# CLIP-ON AND UNDER MOUNTS GENSET RENTALS

Generators (Gensets) are used for powering refrigerated containers either on the ground or in transit.

SSSL owns 150 units, all available for long and short time hire regionally. These include both Clip-on Gensets, which fit on the front of the container, and Undermount Gensets, which are mounted under a Chassis.

Gensets can also be used as a free standing power source when reefers are used for temporary or semi-permanent storage, as well as to meet other compatible electrical needs.





# REEFER DEPOT MANAGEMENT

Reefer containers are an integral part of a complete Cold Supply Chain. SSSL owns and operates the largest reefer service center in the East African region that offers both Hardware and Software solutions. With a total area of 30,000 SQM in Mombasa, we can handle and store over 2500 TEUs.

Our certified MHEs and over 180 power plugging points, can support all your PTIs (Pre-trip inspections) plus reefer plugging requirements on a 24/7 basis. Our other core services include:

- Reefer Services – Handling, Storage, PTIs, Plugin Services
- Pre-Cooling & Testing requirements
- Reefer Monitoring & Software upgrading
- Provision of Clip-on & Undermount gensets
- Remedial works – Software & Hardware
- Reefer Structural & Body Repair Works





# REEFER / GENSET REPAIR & MAINTENANCE

Offered by well trained, certified and experienced staff equipped with high quality spare parts, accessories and equipment.

Our value-added services and inspections will help you maintain operational efficiencies. We also offer checks for:

- Electrical components
- Refrigerator oil levels
- Freon levels
- Software upgrading







Supplies a full range of bunker fuels and marine lubricants across the East African coast



[www.alfoss.com](http://www.alfoss.com)







# OPTIMAL BUNKER SOLUTIONS

Alfoss Energy Limited (AEL), was established in 2010 with the aim of providing a full range of bunker fuels and marine lubricating oils in the port of Mombasa. It began as a synergy between Alpha Group and Fossil Fuels Limited.

Over the years, AEL has established and maintained a cordial working relationship with its clients addressing competently, promptly and in an efficient manner, the needs and requirements of our diverse client base.



# CORPORATE SOCIAL RESPONSIBILITY



## KEY CSR INITIATIVES

### KENYA:

- CONSTRUCTION OF MIRITINI PRIMARY SCHOOL.
- SAPLING TRUST FOUNDATION – Annual provision of Food supplies & Hi-Tech physiotherapy training Equipment for Disabled Children. <http://www.saplingtrust.com/>
- WEMA CENTRE – Annual Funds Contribution to their Rehabilitation Centre
- CEREBRAL PALSY FOUNDATION CENTRE - Annual Fund Contributions to Disabled Children
- LITTLE SISTERS OF THE POOR – Annual provision of Food Supplies.
- BONDENI ORPHANAGE – Annual provision of Food Supplies.

### TANZANIA:

- YATIMA ORPHAN FOUNDATIONS: Annual full School support of all expenses for over 100 Children in Mwanza.
- SUPPORTING OF FOUR PRIMARY SCHOOL IN MAFIA ISLAND – Annual provision of Daily Mid-Day Meal for 1,000 students.





Email: [commercial@alphakenya.com](mailto:commercial@alphakenya.com)

Mobile: +254 722 203 156 | +254 733 203 156

Mbaraki Wharf, Near Likoni Ferry  
Mombasa, Kenya

[www.alphaafrica.com](http://www.alphaafrica.com)





